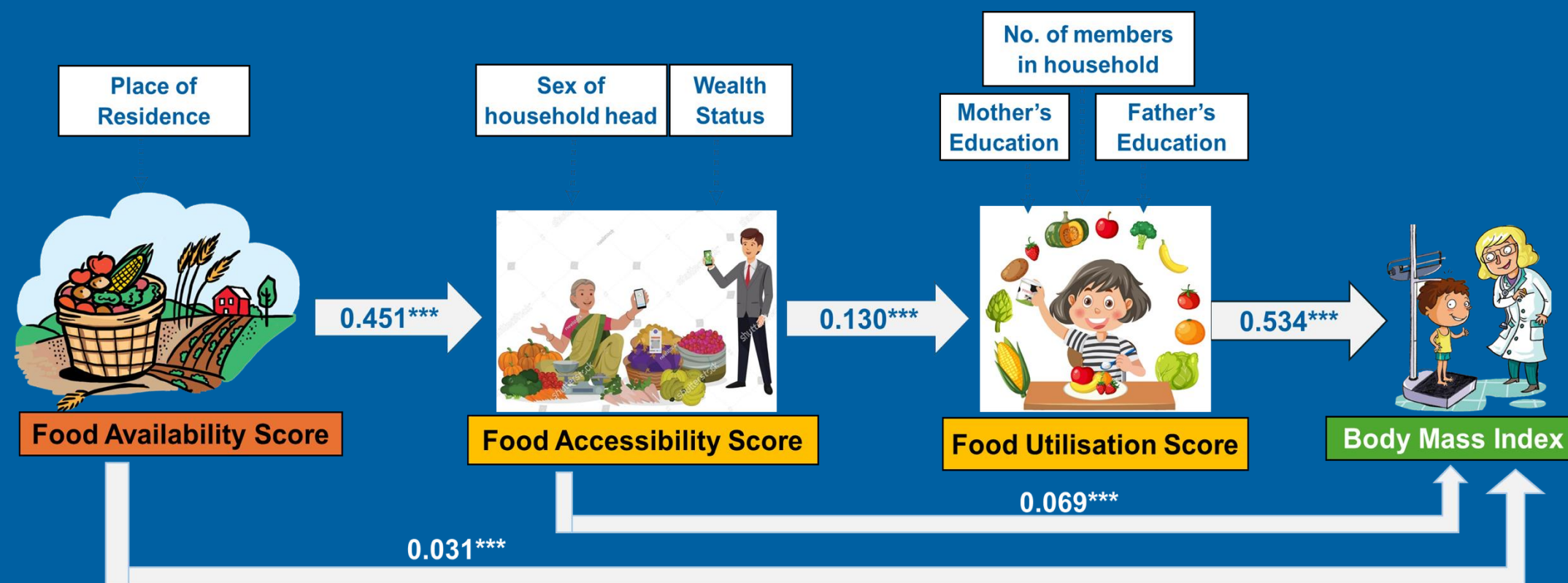


From Farm to Nutrition: Connecting the dots between dimensions of food security and nutrition security in India

Key Message:

- Food availability, accessibility, and utilisation doesn't work in isolation rather cumulatively interact for shaping nutritional outcomes.
- Integrate supply-side approaches (e.g., Nutrition-Sensitive Agriculture) with demand-side programmes (ICDS, Poshan Abhiyan) for stronger national impact.



Total Effect of Food Availability Score on BMI- KHB Decomposition	
Direct Effect: 46%	Indirect Effect (Mediated by Food Accessibility and Utilisation) : 54%

To know more: [Click here](#)

