

Leveraging Women's Leadership and Empowerment in Value Chain for Resilient Livelihoods

Women in Value Chain (WiVC)

Krishna Jogi

Deputy Head of Programme and Lead: Disaster, Climate and Resilience

UN World Food Programme (WFP)

Nepal



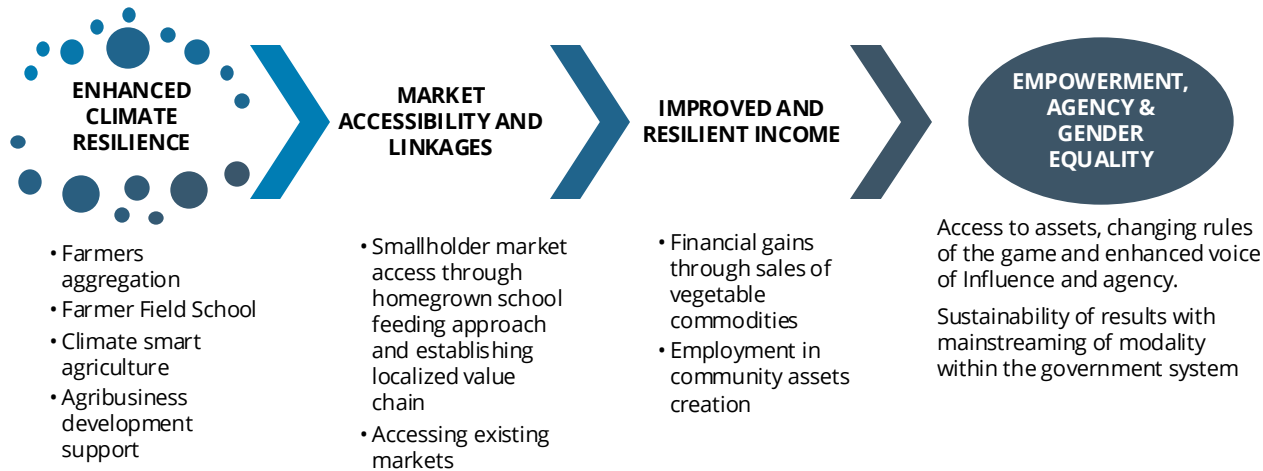
Leveraging Women's Leadership and Empowerment in Value Chain for Resilient Livelihoods

The Women in Value Chain (WiVC) project was tailored to address the diverse challenges faced by smallholder women farmers, primarily aiming at enhancing their resilience to the impact of climate change, disasters and economic shocks while enhancing their food security and nutrition.

Objectives:

1. Increase access to resilient agricultural technologies, information, and services to smallholder rural women for economic empowerment and resilient livelihood.
2. Increase access to reliable and profitable markets and enhance entrepreneurship capacity and business leadership of smallholder rural women farmers. along the agriculture value chain
3. Enhance leadership skills, capacity and agency of rural women for collective bargaining power and establish women's leadership/access in the value chain.


Outcome Roadmap of WiVC project





Project period: April 2020 to March 2024.

Assessments conducted: a Gender Impact Assessment was conducted based on 6-domains of gender equality and women's empowerment and an outcome assessment was conducted using the **outcome harvesting technique** of qualitative monitoring, exploring the project's outcomes, achievements, and lessons learned. **Methods:** **focus group discussions (FGDs), key informant interviews (KIIs), mapping of farmers' livelihood profile (income, expenditure, food security and nutrition status).**



Findings

- 



Nutrition-integrated, resilient and sustainable food system:
Through farmer field school, nutrition-sensitive and climate-smart agriculture, income diversification support, agri-insurance, climate services, post-harvest management, agro-forestry practices, and comprehensive training initiatives, women have access to sustainable food systems, resulting in improved food security and nutrition.


- 



Smallholders Agricultural Market Linkage and Shock-Responsive Protection:
Transformation in market accessibility and linkages for women farmers by connecting them with localized, stable and reliable market/value chain with HGSP approach and commercial markets, and community food banks, cash transfer and Agri-insurance provide shock-responsive protection.


- 

Improved, Diversified and Resilient Income:
Guaranteed market linkages have resulted in financial gains for women farmers, the establishment of agroforestry enterprises with risk transfer mechanisms and short-term employment opportunities in the assets creation activities.


- 

Women's Empowerment, Gender Equality and Disability Inclusion:
Fostered positive changes in economic independence, social dynamics, and gender equality among women farmers and their communities; empowered women to emerge as leaders in community initiatives, altering traditional gender roles and stereotypes, ensured universal accessibility and targeted livelihood support to the persons with disabilities.


- 

Government Engagement and Sustainability:
Joint planning, implementation and monitoring of the programme with local and provincial governments sharing the model of GEWE with the government and mainstreaming of the WiVC model into the government's plan and systems have stimulated lasting change, sustainability of results and wider scaling-up.

