

SATH: A Community-Driven Approach to Improve Maternal and Child Health Nutrition in Nepal

A social mapping tool for promoting equity

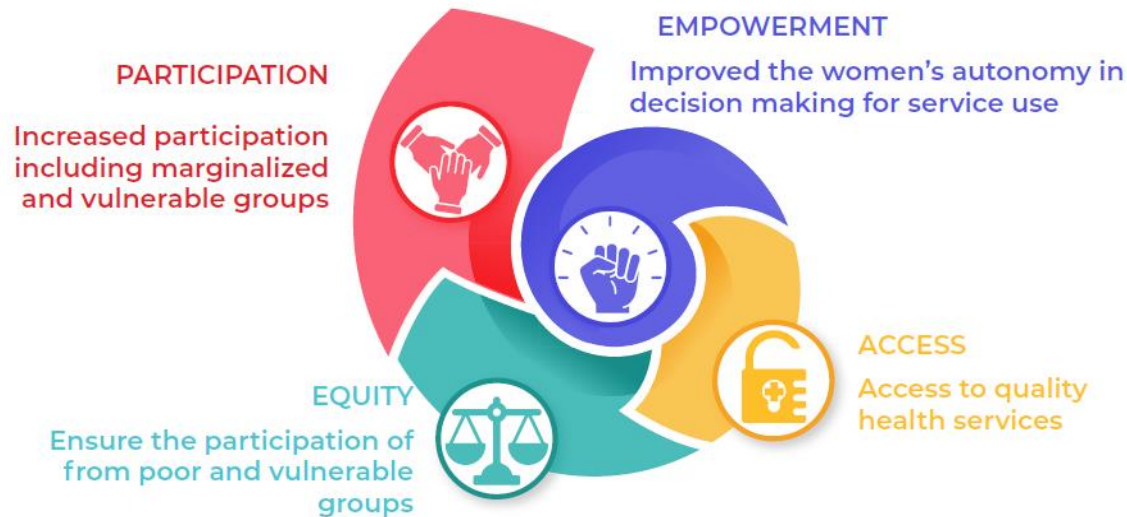
Adweeti Nepal

USAID ARH

CARE Nepal

Self-Applied Technique for Quality Health (SATH): A social mapping tool

SATH's Conceptual Framework



Source: [The SATH Approach: A Cornerstone in Increasing Demand for Health and Nutrition Services among Marginalized Communities](#)

- **CARE Nepal's** SATH tool designed to reactivate health mothers' groups (HMGs) and foster inclusive participation in health services.
- Reached over **5,000 HMGs** across the country.
- **The Suaahara II endline evaluation** showed increased interaction between Female Community Health Volunteers (FCHVs) and 1,000-day mothers
- CARE Nepal's other health and nutrition project suggested **enhanced service access** and **utilization** among marginalized communities.
- Integrated SATH into the government's **Equity Access and Utilization Program**, aiming for nationwide scaling.



Thank you